



Gateway Technology Industry Co. Ltd

No.20 ZhanCui Duan, NanHuang Road, ZhongTang, DongGuang, P.R.C

Tel: +860769088880777 Fax: +86 769 88891688 Web: www.gateway.cn www.gatewayuvprinter.com

Contact: Winnie Wong Email: hope@gateway.cn Tel:+86 13825735231

GJ 5028 Flatbed LED UV Printer	EXW Price: USD 10000/set
---------------------------------------	---------------------------------



1. Ink cartridge supply system, which is easy to change ink and clean.

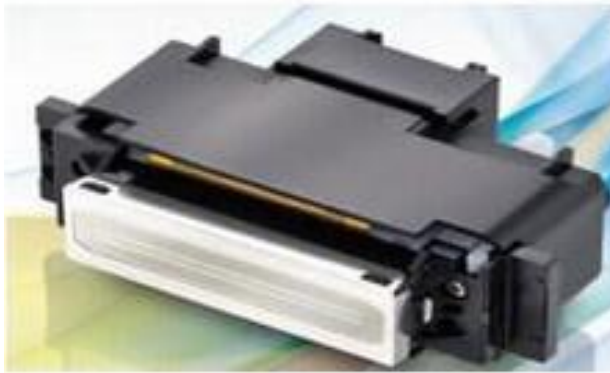
2. The printing speed can reach 8 m² per hour with 4 pass printing mode.

3. Touch panel user interface, which is user friendly and convenient.

Print size	500mm*380mm	Print head	5 pcs Ricoh GH2220
Print speed	8 m ² (720*1200dpi) two-pass	Print color	C/M/Y/K+W
Print resolution	720*1200dpi	Control Software	Colorgate RIP Software
Max print weigh	25 kg	Max print height	80mm
LED lamp life span	8000-10000Hr	Lamp power	300W
Power Supply	110-220V/50-60HZ	UV Cooling System	Water Cooling System
Operating System	Win XP/win 7	Ink And Ink System	UV ink and CISS,150ml/bottle
Ink Usage	Without white underbase: 10ml/SQM With white underbase: 20ml/SQM		
Working temperature	10-35°C	Working humidity	20-75RH
Operation system	Win XP/win 7 or higher	Height Adjustment	Manual/ Infrared
Net weight	130kg	Equipment size	1250*1150*600mm
Warranty	One year	Shipping size	1350*1250*770mm

RICOH GH2220 Print-head Twinkling Appearance!!!

RICOH GH2220 -----VS-----EPSON DX5



1. Sufficient supply and price stability.

Always price change, supply is not stable.

2. Economy and durability, long lift printhead.

Water base printhead, not suitable for UV oil ink purpose.

3. Faster UV ink printing speed.

Slow printing speed, low productivity.

GH2220 Specification

Printhead width	32.4mm (1.28")
Number of Nozzles	384
Printhead Dimensions	61.8×40.5×23.3mm/2.43"×1.59"×0.92" (W*D*H)
Weight	36g
Jetting Frequency	Binary Mode: 30kHz / Grey-Scale Mode: 24kHz
Drop Volume	Binary Mode: 3/5pl / Grey-Scale Mode: 21 ± 2pl
Maximum Gray Scale	4 levels*
Printhead Temperature	10-32℃
Printhead Lift	30 Billion Actuations Per Nozzle

Conclusion: New RICOH GH2220 printhead is designed and produced for 24 hours×7 days working industrial printhead, which applies water base and solvent base inks, is suitable for industrial production. GH2220 lift can have 30 billion actuations per nozzle with a proper maintenance conditions.